

# B1 INSTALLATION DRAWING

IF THIS DOCUMENT IS PRINTED IN HARD COPY, IT IS FOR INFORMATION USE ONLY AND THEREFORE IS NOT SUBJECT TO UPDATING CONTROLS. ALWAYS REFER TO SOLIDWORKS VIEWER FOR LATEST ISSUE



THIS DRAWING IS CONFIDENTIAL AND IS SUPPLIED ON THE EXPRESS CONDITION THAT IT SHALL NOT BE LOANED OR COPIED OR DISCLOSED TO ANY OTHER PERSON OR USED FOR ANY OTHER PURPOSE WITHOUT THE WRITTEN CONSENT OF AP RACING LTD.

AP Racing  
Wheler Road  
Coventry  
CV3 4LB  
Tel: +44 024 7663 9595  
Fax: +44 024 7663 9559  
e-mail: sales@apracings.co.uk  
Web site: HTTP://www.apracings.com

© AP Racing Ltd. 2021

Alterations				
Date & No.	Particulars	Zone	Initials	
01 13/08/2021 B8269	FIRST ISSUE	#	JDD	
02 20/10/2021 B8269	LVDI CP4969-519 ADDED TO OPTIONAL EXTRAS	#	JDD	
03 10/11/2021 B8269_17	PAD PART NUMBER CHANGED TO CP4970-67 WAS CP4970-150	#	JDD	
04 16/12/2021 B8269_23	EFFECTIVE RADIUS CORRECTED TO 151.0, WAS 141.0	#	JDD	
05 10/03/2022 B8269_24	SHEET 3 SPARES KIT PART NUMBERS ADDED	#	JDD	
06 11/08/2022 B8269_30	SHEET 3 ABS SPRING KITS PART NUMBERS CORRECTED	#	JDD	

## GENERAL DESCRIPTION

6 PISTON DIFFERENTIAL BORE CALIPER TO SUIT UP TO Ø355x35mm CARBON DISC WITH A FIXED BRIDGE DESIGN.

## TYPICAL APPLICATION - LMDh / GT

### CALIPER SPECIFICATION

BORE SIZE	BDE (26.00 x 28.58 x 31.75) (1.02" x 1.125" x 1.25")
PISTON AREA (TOTAL)	39.3cm <sup>2</sup>
DISC DIAMETER MAX	355.0mm
DISC THICKNESS (NEW)	32.00-35.00mm
PAD PART NUMBER	CP4970-67 (23.50mm THICK)
PAD THICKNESS (NEW)	25.00-23.50mm
STACK WIDTH NEW	82.00mm
STACK WIDTH WORN	49.00mm
MAX WEAR PER SIDE	16.50mm
HYDRAULIC FEED	M10x1.0 15.00 THREAD DEPTH
DUCTING MOUNTS	M4x0.70 5.0mm MIN THREAD DEPTH
SCRAPER MOUNTS	NONE
TEMPERATURE SENSOR MOUNT	M4x0.70 5.0mm MIN THREAD DEPTH
DRY WEIGHT (WITHOUT PADS)	2.13kg (EST.)
EFFECTIVE RADIUS (ON Ø355mm DISC)	151.0mm
'PL' DIMENSION (TOP OF PAD FRICTION MATERIAL TO CALIPER MOUNTING FACE)	63.50mm
'C' DIMENSION (CALIPER OFFSET)	42.00mm
'U' DIMENSION (UPRIGHT MOUNTING)	114.0mm U = (DISC Ø / 2) - PL
TIGHTENING TORQUES	BLEED SCREW: SEE SHEET 3 PAD LEDGE SCREWS: 4Nm TYPICAL M12 MOUNTING BOLT: 65Nm (GUIDANCE ONLY)

### CALIPER POSITIONING

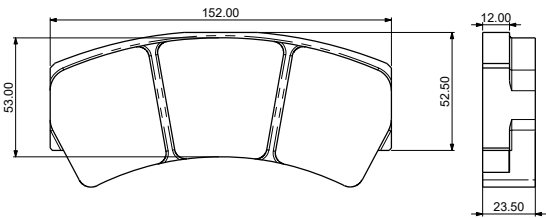
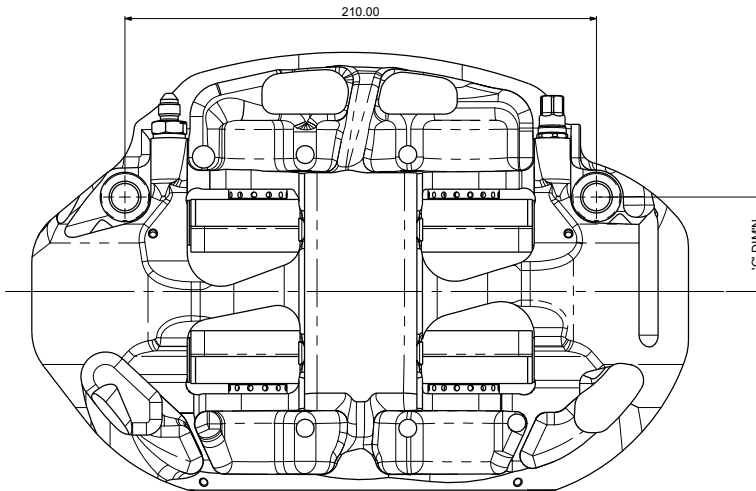
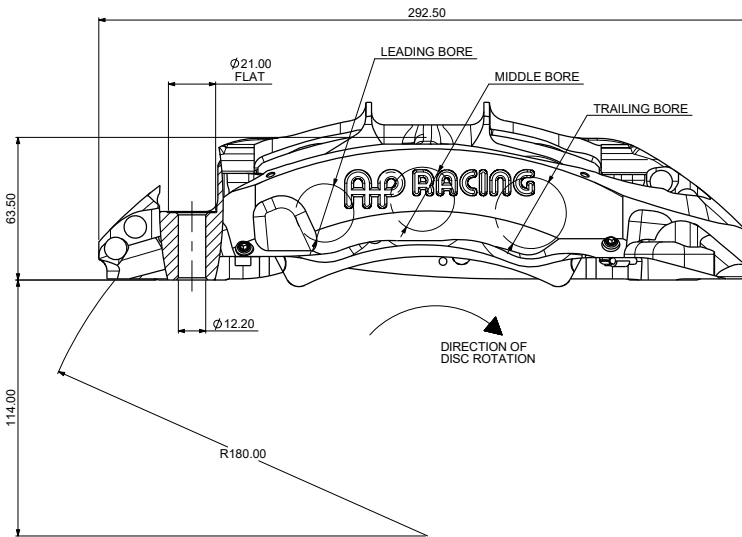
RHT	RIGHT HAND TRAILING (BEHIND AXLE)
LHT	LEFT HAND TRAILING (BEHIND AXLE)

### PART NUMBERING CONVENTION

PART NUMBER	DESCRIPTION
CP6187-2S0M	RIGHT HAND TRAILING - TITANIUM PISTONS
CP6187-3S0M	LEFT HAND TRAILING - TITANIUM PISTONS

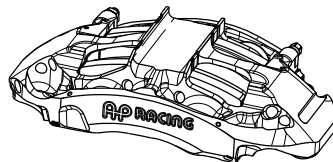
### INSTALLATION INFORMATION

THE CALIPER IS DESIGNED SO THAT THE DISC WILL BE MOUNTED CENTRALLY WITHIN A TOLERANCE OF ±0.50mm.  
THE CALIPER IS TO BE MOUNTED IN EITHER A TRAILING POSITION 0.0°/-35.0° FROM VERTICAL, OR A LEADING POSITION ±15° FROM VERTICAL.  
THE DIAMETRICAL CLEARANCE BETWEEN THE DISC OUTSIDE DIAMETER AND THE PATHWAY SHOULD BE 2.50mm NOMINALLY.



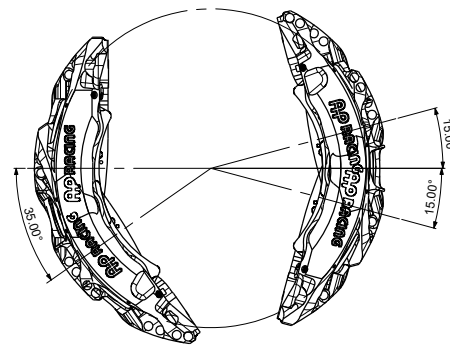
CP4970-67H\*\* CARBON/CARBON PAD

AREA = 78.1cm<sup>2</sup>  
THICKNESS = 23.5mm



ISOMETRIC VIEW

**OPTIMUM BLEED POSITIONING**  
FOR OPTIMUM BLEED, THE CALIPER SHOULD BE INSTALLED IN A POSITION BETWEEN THE ANGLES SHOWN



SCALE 1:1	SHEET 1 OF 3
DRAWN jdvies	
APPROVED	
DERIVED FROM	
TITLE	
6 PISTON (BDE) CALIPER Ø355x35.0 DISC & 53.0 PAD	
DRG NO.	CP6187-1cd

# B1 INSTALLATION DRAWING

IF THIS DOCUMENT IS PRINTED IN HARDCOPY, IT IS FOR INFORMATION USE ONLY AND THEREFORE IS NOT SUBJECT TO UPDATING CONTROLS. ALWAYS REFER TO SOLIDWORKS VIEWER FOR LATEST ISSUE

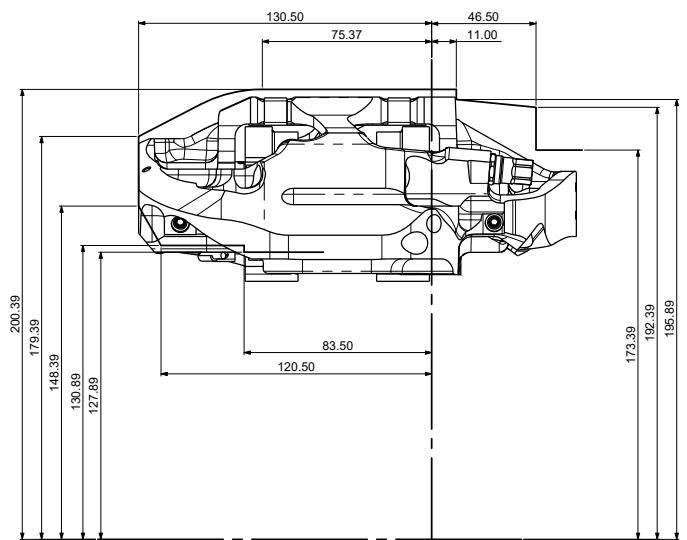


THIS DRAWING IS CONFIDENTIAL AND IS SUPPLIED ON THE EXPRESS CONDITION THAT IT SHALL NOT BE LOANED OR COPIED OR DISCLOSED TO ANY OTHER PERSON OR USED FOR ANY OTHER PURPOSE WITHOUT THE WRITTEN CONSENT OF AP RACING LTD.

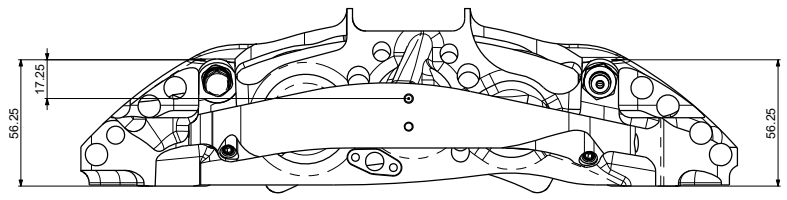
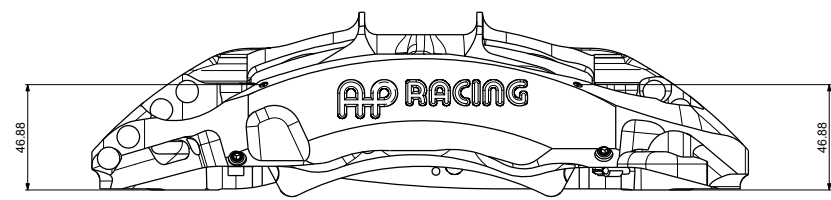
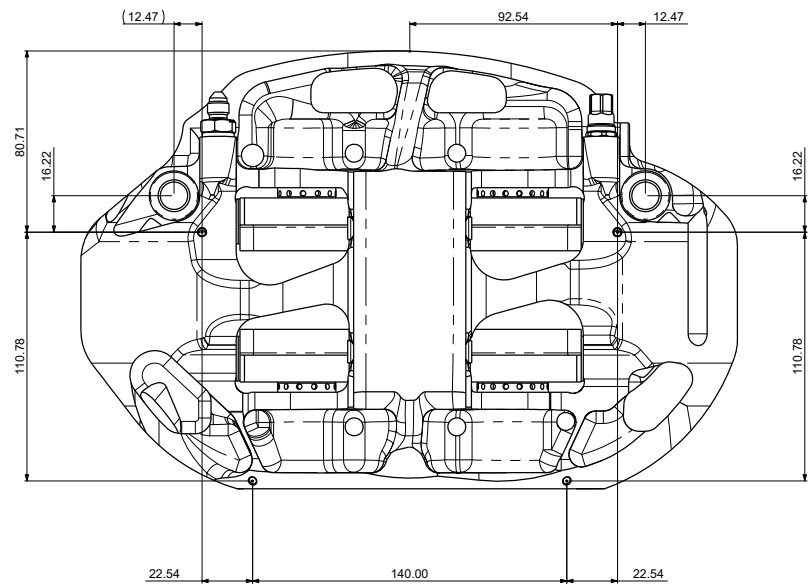
**AP RACING**  
 AP Racing  
 Wheler Road  
 Coventry  
 CV3 4LB  
 Tel: +44 024 7663 9595  
 Fax: +44 024 7663 9559  
 e-mail: sales@apracings.co.uk  
 Web site: HTTP://www.apracings.com

© AP Racing Ltd. 2021

## DUCT MOUNTING POINTS



### RADIAL PROFILE FOR Ø355.0 DISC



Issue No.	Alterations		
	Date & No.	Particulars	Zone / Initials
-	-	SEE SHEET 1 FOR ISSUE INFORMATION.	-

SCALE 1:1 SHEET 2 OF 3

DRAWN jdvies

APPROVED

DERIVED FROM

TITLE  
**6 PISTON (BDE) CALIPER  
 Ø355x35.0 DISC & 53.0 PAD**

DRG NO. CP6187-1cd

# B1 INSTALLATION DRAWING

IF THIS DOCUMENT IS PRINTED IN HARD COPY, IT IS FOR INFORMATION USE ONLY AND THEREFORE IS NOT SUBJECT TO UPDATING CONTROLS. ALWAYS REFER TO SOLIDWORKS VIEWER FOR LATEST ISSUE



THIS DRAWING IS CONFIDENTIAL AND IS SUPPLIED ON THE EXPRESS CONDITION THAT IT SHALL NOT BE LOANED OR COPIED OR DISCLOSED TO ANY OTHER PERSON OR USED FOR ANY OTHER PURPOSE WITHOUT THE WRITTEN CONSENT OF AP RACING LTD.



AP Racing  
Wheler Road  
Coventry  
CV3 4LB  
Tel: +44 024 7663 9595  
Fax: +44 024 7663 9559  
e-mail: sales@apracings.co.uk  
Web site: HTTP://www.apracings.com

## CP6187-2 / 3S0L SPARES

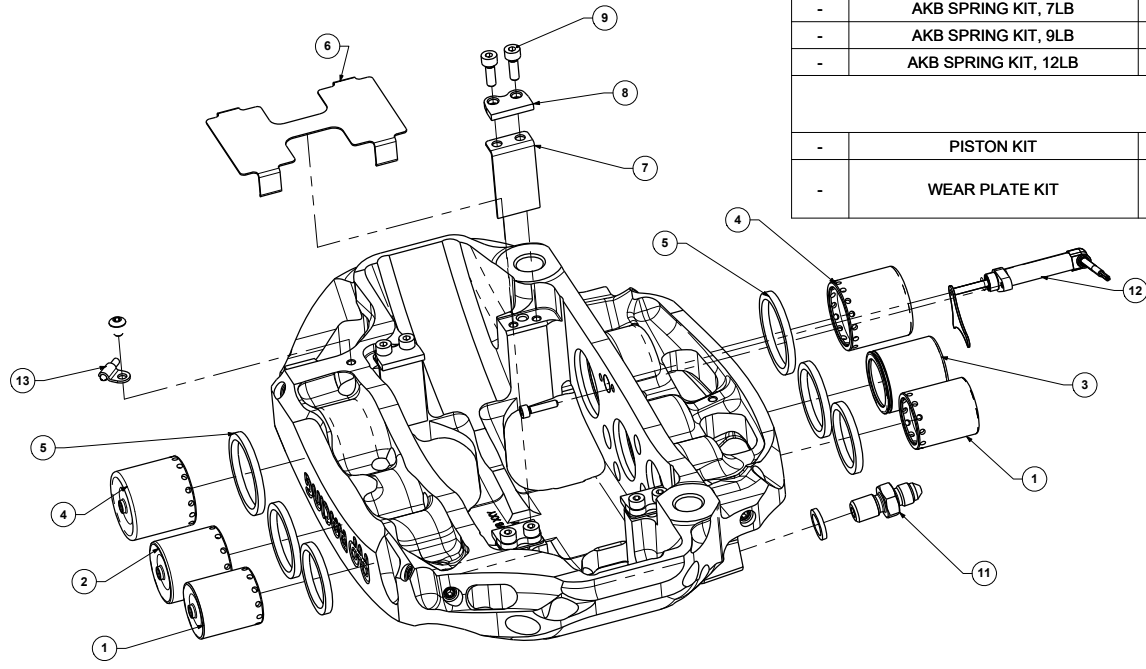
REF	DESCRIPTION	PART NUMBER	QTY PER ASSEMBLY	FITTING INSTRUCTIONS
1	Ø26.00 [1.02"] TIT PISTON (B BORE)	CP6187-104	2	-
2	Ø28.58 [1.125"] TIT PISTON (D BORE)	CP6187-105	1	-
3	Ø28.58 [1.125"] TIT LVDT PISTON (D BORE)	CP4969-521	1	-
4	Ø31.75 [1.25"] TIT PISTON (E BORE)	CP6178-106	2	-
5	SEAL KIT (6 SEALS)	CP8518-BDE	1	REFER TO PUBLICATION REF P14.290 & P14.220
6	LID WEAR PLATE	CP6187-107	1	-
7	PAD ABUTMENT PLATE	CP6187-108	4	-
8	PAD SUPPORT	CP6187-109	4	-
9	M4x0.7 SOCKET HEAD CAP SCREW	CP3215-115	8	APPLY 1-2mm DROP OF LOCTITE 270 TO THE 2nd FROM LAST THREAD WHEN FITTING  TIGHENING TORQUE - 4.0Nm
10	DRY BLEED SCREW KIT	CP6300-21	1	APPLY A SMALL AMOUNT OF LOCTITE 270 TO THE THREADS BEFORE FITTING  VALVE TIGHENING TORQUE - 13Nm CAP TIGHENING TORQUE - 4.0Nm
11	BLEED SCREW	CP6160-107	1	APPLY A SMALL AMOUNT OF LOCTITE 270 TO THE THREADS BEFORE FITTING  TIGHENING TORQUE - 17Nm

## OPTIONAL EXTRAS

12	LVDT KIT	CP4969-519	1	REQUIRES M3x0.5 BUTTON HEAD SCREW, MIN LENGTH 12.00mm
13	THERMOSENSOR KIT	SEE CP6282-1cd	2	-
-	AKB SPRING KIT, 4LB	CP6518-4LBSSS	1	-
-	AKB SPRING KIT, 7LB	CP6518-7LBSSS	1	-
-	AKB SPRING KIT, 9LB	CP6518-9LBSSS	1	-
-	AKB SPRING KIT, 12LB	CP6518-12LBSSS	1	-

## SPARES KITS

-	PISTON KIT	CP6187-50	1	-
-	WEAR PLATE KIT	CP6187-51	1	APPLY A SMALL AMOUNT OF RED RTV BEHIND THE WEAR PLATES DURING ASSEMBLY



Issue No.	Alterations			Zone	Initials
	Date & No.	Particulars			
-	-	SEE SHEET 1 FOR ISSUE INFORMATION.	-	-	

SCALE 1:1 SHEET 3 OF 3

DRAWN jdvies

APPROVED

DERIVED FROM

TITLE  
6 PISTON (BDE) CALIPER  
Ø355x35.0 DISC & 53.0 PAD

DRG NO. CP6187-1cd